

/ / :_____

"
"
"

()

The local features in the Islamic architecture

Dr. Ahmad Abdulwahid Thannoon

Lecturer / Arch. Dept / Mosul University

Abstract:

Islamic architecture has spread in a wide geographical regions, covering many areas and cities with distinct civilizations, Most of these areas and cities imposed their local architectural features on the forms of Islamic buildings in these areas due to the flexibility that characterized the process of composition output of Islamic architecture represented in different functional patterns as mosques, palaces, schools, baths and markets.

This paper tries to study in-depth the existence of these local features and its assets in a range of distinct civilized areas covered by Islamic architecture. Reviewing previous studies concerning the research topic revealed the problem of the research which was the absence of enough theoretical knowledge about the details of local features in the Islamic architecture models, Thus, the research made it its goal to determine impact of these features on Islamic architecture and to disclose the process of employing it in the Islamic architecture buildings. To achieve this goal, the research adopted an approach with a number of steps: first, determining a theoretical framework with a collection of detailed vocabulary for studying the impact of local features, as the types of local features, the types of processing these features, and locations of the impact of them within the building, and the nature of the functions performed by these features, Then the application of this theoretical framework on mosques buildings in Islamic architecture in a group of areas with distinct civilizations and up to analyze the results and determine the deductions.

: -2
:(2009) :1-2

:() -1

)

[186 35 2009] (

2009]

.[188

()
()

[36,191-35 2009]

()

)

()

] -140 2009](
[182 2009 (1-) [166,341
()

[145 2009]
(2-)

) [207-204 2009]
(4- .[214 2009]
.[209 2009] :(2009) :2-2
:(2002) :3-2

)
([111 2009]
[120 2009]
)
/) ()
(
.[24-23 2002]) [156 2009]
(3-

()
2009]
[166

:(1988) :4-2

2002]

[246-186

[370 1988]

1988]

[241 2002]

[375

[248-247 2002]

]

2002]

[376 1988

[248

[376 1988]

2002]

[243

/
•

)

(Offset

2002]

.[247-246

: •
.[661 2000]

)

[398 1988]

:

(

)

[399 1988]

.(

:

-4

)

(

]

[399 1988

:

-5

:

-3

:

:1-5

:2-5

:3-5

1970]
.(5-) .[212 196 : :1-5

: (2

:
:1-1-5
() :

[36-35 2009]

: (1

1970]
.[184
(3

:

] [214 35,186 2009

[36,142 2009]

[376-375]

]-166·204 2009] [172-170 2009] [207·209
[290 1970

1988] [182 2009] .[398
: (4

] (3-)
.[207-206 2009
(5
:

-186 2002] [246
-140 2009] [342

].[207-204 2009] 1970] [224-223

)

] [209-180·208 1970

2009)] () :2-1-5
[186 :
(2002
(
) ()
(
] [1988
2002]
.[241
:3-1-5]
: 1988 [375

:
.[376 1988]
: (1 (2009)

Transformation

()
[288 1970]

[286 1970]

: (4

: (2

()

()

/)

(

2009]

[35 2009]

[156

[Hillenbrand, 1994, p22]

()

1988]

()

.[398

: (3

]

[142 2009

()

()

[182 2009]

.[36-35 2009]

]

:4-1-5

[207-204 2009

:

]

.[246-186 2002

:(8)

-1

:

•

(1

-2

(2

)

(3

/(

(4

)

-3

/(

-4

/

-5

/

.(7-

)

:1-2-5

:(

)

:2-5

:

:

:

:1-2-5

(5 4 3 2 1)

:

:3-5

•

Argan,1963,] Argan

[Frankl,1968, p158]

[p244

.[Baker,1996, p75-26]Baker

(%22)

.(%10)

:4-3-5

:

(6-)

(6-)

:

:1-3-5

(%46.6)

:

(6-)

(%25.9)

(%13.75)

.(%13.75)

(%38.2)

:

-6

(%26.2)

(21.4)

(7.1)

.(7.1)

()

:2-3-5

:

-1

:

(6-)

()

:

-

(%71.4)

:

()

.(28.6)

:3-3-5

:

(6-)

.(

(%40)

:

()

-

(%28)

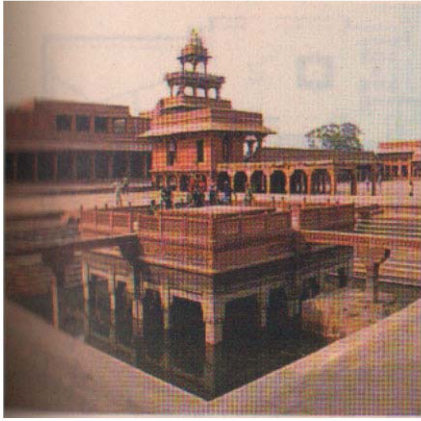
.()
) -
(

. -
:

-
:

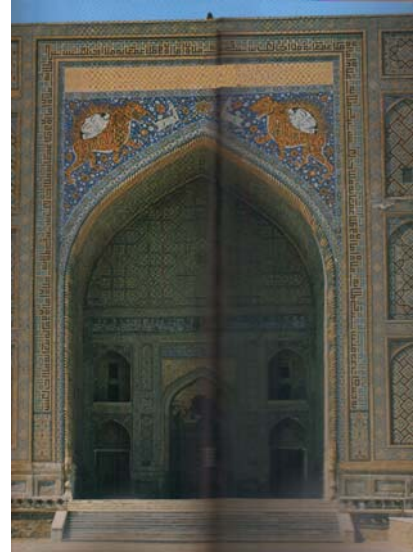
- -2

:
-



(1)

] [166 2009



(3)

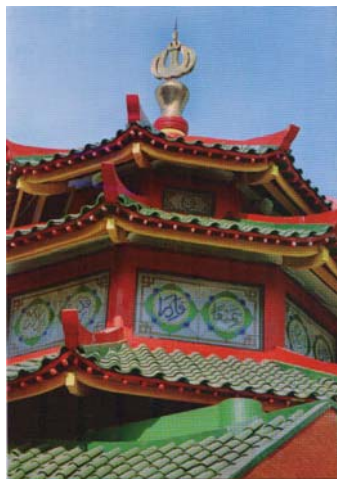
(2)

/) [157-111 2009] (



(5)

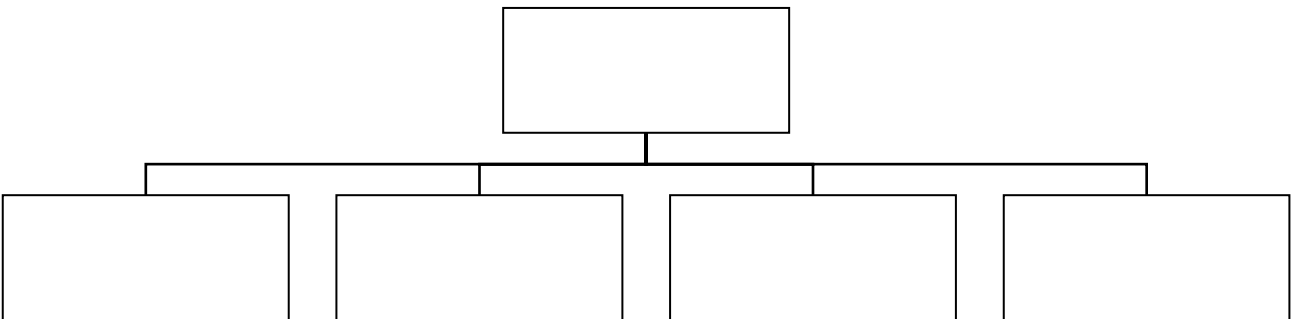
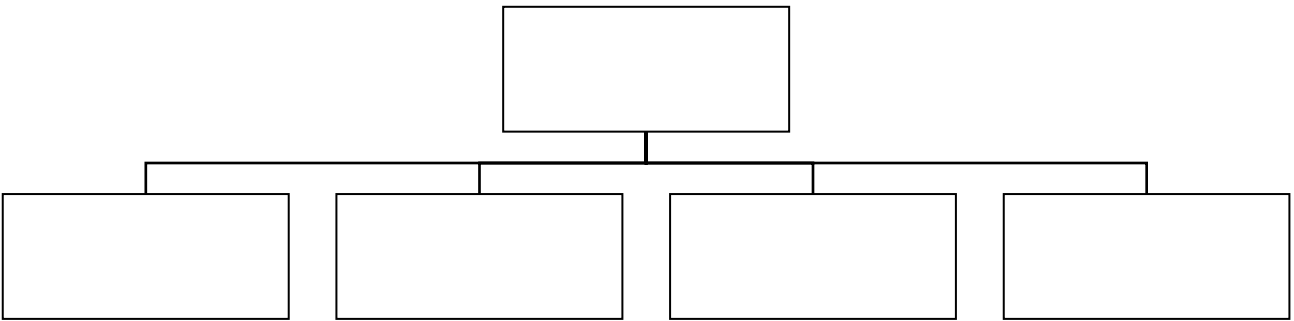
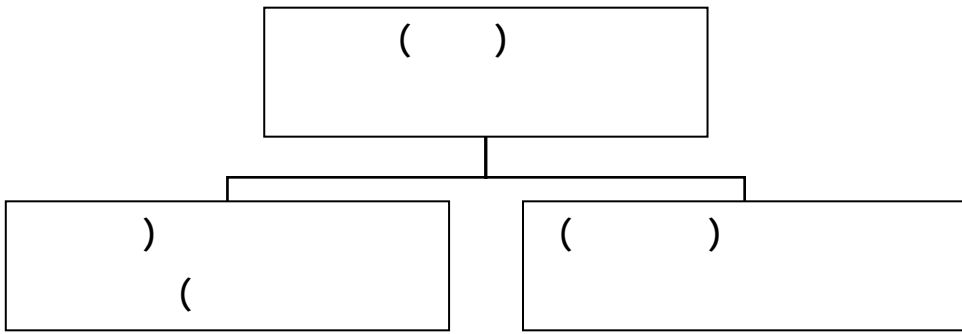
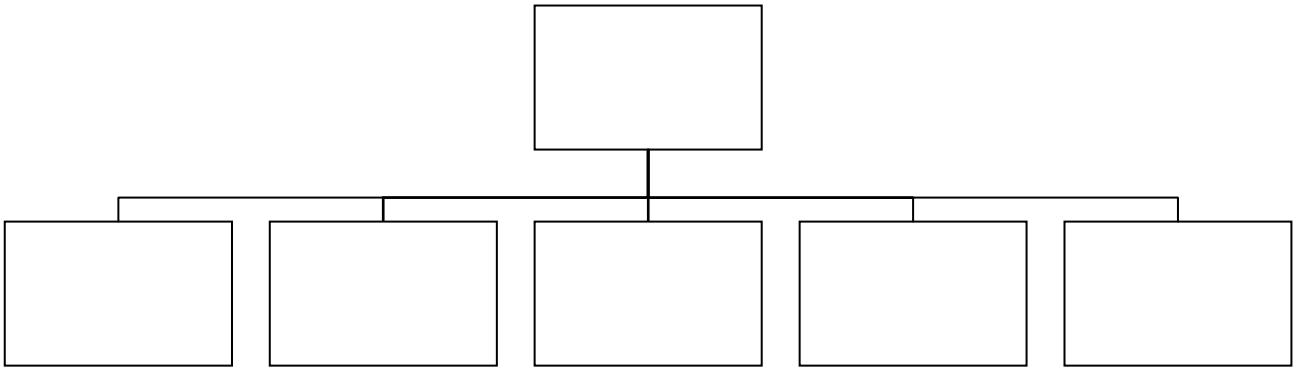
[]

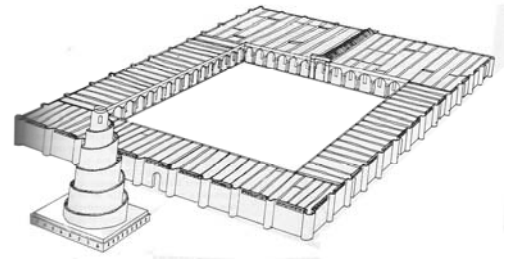


(4)

] .[208-204 2009

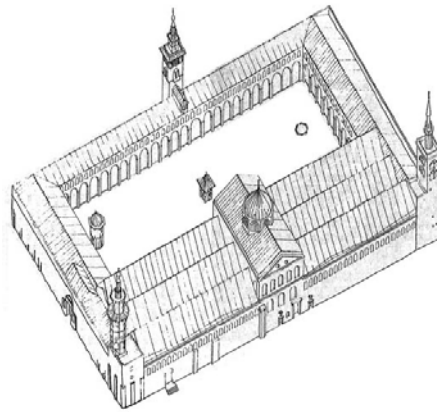






234

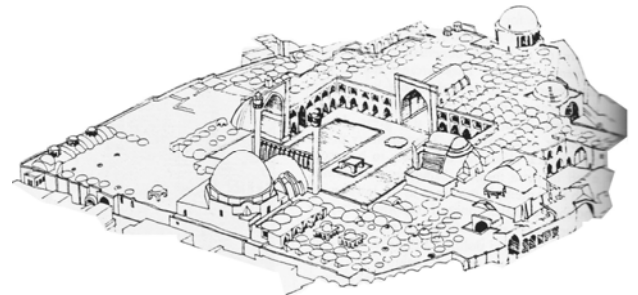
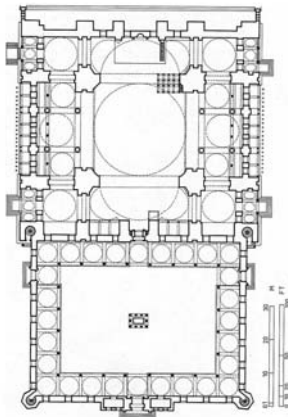
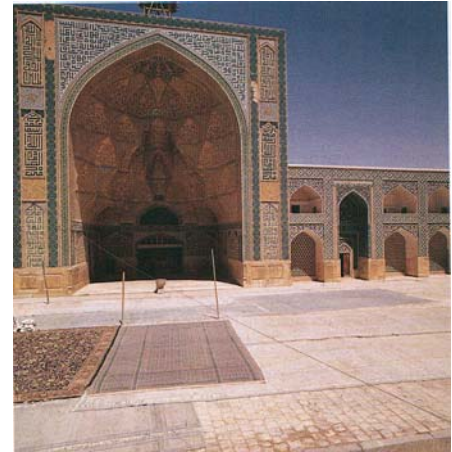
(1)



87

/

(2)



10

/

/

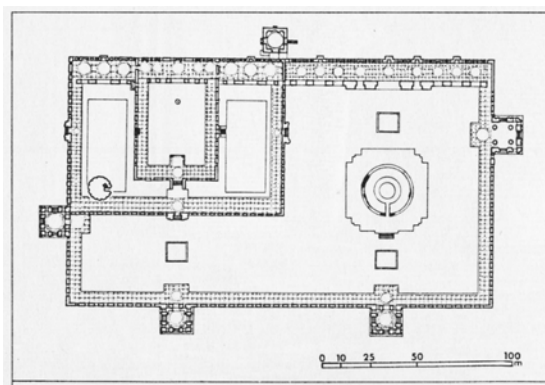
(4)

7

/

/

(3)

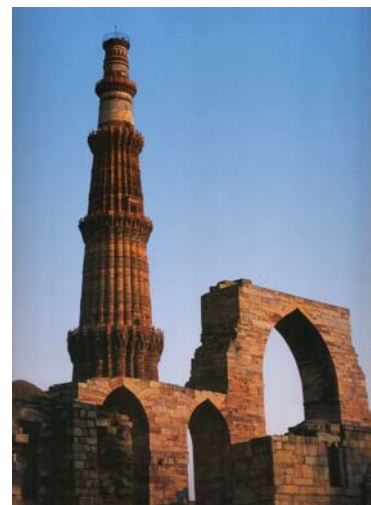


7-6

/

/

(5)



(8)

(2)

() :																
87 :																
●		●	●	●				●				●			[45 1995]	1
	●					●		●						●	[36-35 2009]	2
	●	●				●			●					●	[212 1970][136 2002]	3
●		●				●			●			●			[137 2002]	4
		●			●			●			●				[46 1995]	5
	●	●			●			●			●				[141 2002]	6
	●					●	●	●						●	[286 1970]	7
	●							●					●		1995] [44	8
	●	●	●	●		●		●						●	[48 1995]	9
								●							(48 1995)	10

(6)

		()					
							:
%38.2	16	3	3	5	4	1	(1
%7.1	3	1	□	□	1	1	(2
%21.4	9	2	1	1	2	3	(3
%26.2	11	2	3	2	3	1	(4
%7.1	3	1	1	□	□	1	(5
%100	42	9	8	8	10	7	
							:
%28.6	12	2	3	2	2	3	() (1
%71.4	30	7	5	6	8	4	() (2
%100	42	9	8	8	10	7	
							:
%10	5	□	3	1	1	□	(1
%40	20	5	3	4	5	3	(2
%28	14	3	3	3	3	2	(3
%22	11	3	1	2	2	3	(4
%100	50	* 11	*10	*10	* 11	* 8	
							:
%13.75	8	2	2	1	1	2	(1
%46.6	27	6	5	6	6	4	(2
%25.9	15	2	4	2	6	1	(3
%13.75	8	3	1	1	2	1	(4
%100	58	• 13	• 12	• 10	•15	• 8	
							:
							•

			:	-7
	.1970			
	"	-9	/	"
	/			"
	1	"		
	.2009		.2009	
	"	-10		"
	"			"
	2		2	
	.1995			
11-	Argan, Guilio Carlo, “ On Typology of Architecture “, Architectural Design , Vol 33, No.11/12, London, 1963.		.1995	
			"	"
			"	"
				-3
12-	Baker, Geoffrey H., “ Design strategies in Architecture- an approach to the analysis of form ”, 2 nd ED, St. Edmundsbury Press Ltd, Great Britain, 1996.		2	
13-	Frankl, Paul,” Principles Architectural History –The Four Phases of Architecture Style: 1420-1900 ”, 1968.		.1988	
			"	
			"	-4
14-	Goodwin, Godifrey, “ Islamic Architecture, Ottoman Turkey ”, Scorpion Publications, Ltd, 1977.		2	
15-	Hillenbrand, Robert, “ Islamic Architecture, form, function and meaning ”, Edinburgh University press, 1994.		.1995	
			"	
			2	"
				-5
16-	Hoag, John D, “ ISLAMIC ARCHITECTURE ”, Harry N. Abrams, Inc., Publishers, New York, 1977.		.2000	
			"	
			1	"
				-6
17-	kuran, Abtullah, “ The Mosque in Early Ottoman Architecture ”, The University of Chicgo press, Chicago and London, 1968.		.2006	
			"	
			1	"
				-7
18-	Migeon, Gaston & Saladin, Henri, “ Art of Islam ”, Parkstone Press International, New York, USA, 2009.		.1982	
			"	
			"	-8